



*One of the 39 volumes*

The collection covers the gamut of Brighton life; interestingly, photography was advancing concurrently with the physical enlargement of the town, and the result is a unique and fascinating view of our past that has dictated our present. The detailed notes that accompany the photographs explain the changes that have taken place.

It is essential viewing for anyone concerned with the present fabric of the city and The Regency Society is pleased to be able to offer it as an educational resource to all those interested in the development of the built environment as well as changing social customs.

The digitisation of the collection has been financed by sponsorship and the Society would like to thank all those who made it possible:

The memory of Elaine Violet Baird • Ulla Dunlop • Robert Ellery • The memory of Phyl and Eddie Edwards • Robert Edwards • Ian Farrell • Gordon Garland • Edward Goring • Gavin Henderson • Hove Civic Society • Lavender Jones • Friends of Irene Mary Laney • Frances and Martin Lindsay-Hills • Lloyds TSB Commercial - Sussex • Duncan McNeill • Catherine Moriarty • Anne Moncrieff • Phillip Quick • Yvonne and Michael Ray • Peggy Robinson • The Brighton Society • Brighton Books Publishing • Brighton Town Press • The Friends of West Blatchington Mill • The Montpelier and Clifton Hill Association • The Portslade Local History Group (Carolyn and Richard Williams, Judy Pratt, Trevor Povey, Ian Farrell) • The Preston and Old Patcham Society • The Regency Square Area Society • Rottingdean Parish Council • Rottingdean Preservation Society • Anon



The Regency Society is the oldest conservation and amenity society in Brighton and Hove. The Society is for everybody who cares about preserving the heritage of the city and ensuring that new developments improve the quality of life here. It is also for anybody who would like to learn more about the beautiful buildings we have inherited and how best to live in and use them today.

The Regency Society was formed in 1946 to fight the proposed demolition and redevelopment of the terraces and squares of the seafront. It is a registered charity which campaigns for the preservation of the historic architecture of Brighton and Hove and promotes Georgian, Regency, Victorian and 20th and 21st century art and architecture. The Society also works with Brighton and Hove Council and other bodies on planning matters such as new roads, buildings and the use of open spaces.

Whenever an important new development is put forward in Brighton and Hove, the Regency Society is consulted and seeks to influence planning decisions. Recently, the Society has been involved in discussions on schemes covering the Jubilee Library, the Marina, the King Alfred Complex and the Black Rock redevelopment, among many others. The Society aims to encourage the highest standards of new development whilst respecting the historic fabric of the city.

Leading authorities from around the country come to Brighton to share their experience and expertise with members of the Regency Society through a programme of lectures—details of the current series are on our website.

The Regency Society worked for the establishment of conservation areas in Brighton and Hove and is represented on the Conservation Advisory Group which advises the City Council on planning applications. It has made financial contributions to the restoration of several important buildings in the town, including St Nicholas' and St Peter's churches, and the Royal Pavilion. It maintains an archive of items of local interest and has also placed on loan a number of items of furniture at the Royal Pavilion.



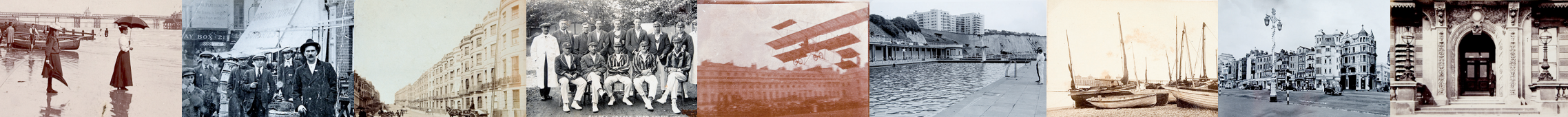
# The Regency Society

## The James Gray Collection



*The photographic history of the development of Brighton*





**J**ames Gray, 1904-1998, was a local collector with a passion for the streets of Brighton and Hove, and, as time went on, further afield. Working all his life in insurance, his initial collection of stamps gave way to local topographical photographs with the chance acquisition in the 1950s of a few images of Western Road. From then on he built up a massive collection—some 7500 images, all with annotations: some of the entries are copies, exchanged with other collectors, others are views that he purchased or, more recently, that he commissioned. Although there is today a strong general interest in old photographs, both for their factual content and also for their artistic value, when James Gray started his collection there was little concern: we must be grateful that he had the foresight and the single minded dedication to assemble this unique record of our city.

**O**n his death, The Regency Society purchased his collection with the intention of making it available to researchers and interested parties. To this end the Society has digitised it in order to provide a copy of the archive for future generations. The collection—the photographs together with the commentary by James Gray—may be viewed on the Society's website.

**T**he Society encourages visitors to its website to consider the transition that has taken place to drive a small fishing town to become a city by the sea; change is inevitable and welcome—how well this is managed may be seen in these photographs, and possibly offer some ideas for the future.

## The Collection by Volume

- 1 **Sea Front**  
*Hove Boundary to Russell Street, Metropole Hotel*
- 2 **Sea Front**  
*West Pier, Grand Hotel, Russell Street to West Street*
- 3 **Sea Front**  
*West Street to Queens Hotel*
- 4 **Sea Front**  
*Grand Junction Road, Palace Pier, Aquarium*
- 5 **Sea Front**  
*Chain Pier, Madeira Drive*
- 6 **Sea Front**  
*Marine Parade to Black Rock*
- 7 **Old Town**  
*West Street, Middle Street, Clock Tower*
- 8 **Old Town**  
*Middle Street, Duke Street, Boyces Street, Ship Street, Black Lion Street, Nile Street, Market Street*
- 9 **Old Town**  
*Market Street, Bartholomews, The Lanes, Town Hall, Brighton Place, Old Steine*
- 10 **Old Town**  
*Old Steine, Royal Pavilion*
- 10A **London Road**  
*London Road and all streets west to the railway above York Hill, New England Road*
- 11 **Hove: East**  
*From Brighton Boundary to Selbourne Road*
- 12 **Hove: Central**  
*From Grand Avenue to Hove Street*
- 13 **Hove: Central**  
*Church Road, George Street, Hova Villas, Ventnor Villas, Town Hall,*
- 14 **Hove: Central**  
*From Wilbury Road to Sackville Road including Blatchington Road area*
- 15 **Hove: West**  
*West from Hove Street to Kingsway*
- 16 **Hove: North West**  
*West from Sackville Road above New Church Road, north of the Railway and west of Nevill Road, Goldstone Farm Football Ground*
- 17 **Hove:**  
*North East From Brighton Boundary to the top of Dyke Road Avenue*
- 18 **Preston Area**  
*Preston Road, Preston Village, Preston Park, Railway Station*
- 19 **Western Road**
- 20 **Ditchling Road**  
*The Level, Sylvan Hall, Hollingdean Estate, Preston Drive, Balfour Road*
- 21 **North Street**  
*Dyke Road, Queens Square, Princes Place*
- 22 **Eastern Brighton (Inner)**  
*Edward Street, Streets between Eastern Road and Kemp Town Station*
- 23 **Eastern Brighton (Outer)**  
*Eastern Road, Brighton College, County Hospital, Manor Farm, Whitehawk, Black Rock, Rottingdean Road*
- 24 **East Central Area**  
*Old Slums between Edward Street and Sussex Street, Queen's park and surrounding area, Tillstone Street*
- 25 **North Central Area**  
*From North Street to York Hill, all streets between west of Central valley and London Road*
- 26 **NW Brighton**  
*Dyke Road Avenue to Clock Tower, all streets west of Dyke Road to Hove Boundary above Western Road*
- 27 **NE Brighton**  
*Sussex Street, Richmond Street, Albion Hill, Elm Grove, Racecourse, Lewes Road (East Side)*
- 28 **Lewes Road Area**  
*Lewes Road, Cemeteries, Moulsecoomb, Bevendean, Hodshrove Farm, Coldean*
- 29 **West Brighton**  
*From the Clock Tower west to the Hove Boundary below Western Road*
- 30 **Central Valley**  
*From the Dome to St Peter's Church, Marlborough Place, Grand Parade, Gloucester Place, St George's Place*
- 31 **The Station Area**  
*From Seven Dials across to the Railway Station east of Dyke Road, Queens Road*
- 32 **Rottingdean & Saltdean**  
*Rottingdean, Saltdean, Telscombe, "Daddy Longlegs"*
- 33 **Greater Brighton**  
*Roedean, Ovingdean, Woodingdean, Stanmer, Falmer, Saddlescombe, Poynings, Fulking, The Downs*
- 34 **Withdean**  
*Preston Road, London Road, Westdene, Tongdean Lane Area*
- 35 **Patcham Old Village**  
*London Road, Farms, Waterworks, Church Hill, Saltdean, The Chattri*
- 36 **West Blatchington**  
*Neville Road, Stadium, Waterworks, Houses SW of the Copse*
- 37 **Hangleton**  
*Hangleton Farm, and later housing on site., Gibbets Farm, Devils Dyke, The Dyke Railways*
- 38 **Portslade**  
*Portslade, Southwick and Shoreham, Harbour and Canal*

